

# COMPREHENSIVE STORMWATER MANAGEMENT FOR COMMERCIAL SETUPS

COLLECTION, TREATMENT, ATTENUATION, REUSE  
AND INFILTRATION OF SURFACE RUNOFF





# CONTENTS

---

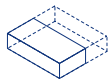
<b>ALL-ENCOMPASSING STORMWATER MANAGEMENT</b>	4
<b>BENEFIT FROM STRESS-FREE STORMWATER SOLUTIONS</b>	6
<b>OPTIMIZE PERFORMANCE WITH SMART SOLUTIONS</b>	8
<b>CREATE SUSTAINABLE VALUE</b>	10

---

---

# ALL-ENCOMPASSING STORMWATER MANAGEMENT

In a changing climate, efficient stormwater management is crucial to protect your business and premises from heavy rainfall and flooding. PIPELIFE provides comprehensive stormwater solutions that help you maximize usable land, increase resource efficiency, and future-proof your setup in the face of evolving environmental regulations and measures.



## MAXIMIZE PLOT CAPACITY

The majority of our stormwater management solution is installed entirely underground. Our space-efficient designs are tailored to ensure you can take full advantage of your property's available space, maximizing accessibility and heavy-load trafficable zones for optimal business activity.



## INCREASE RESOURCE EFFICIENCY

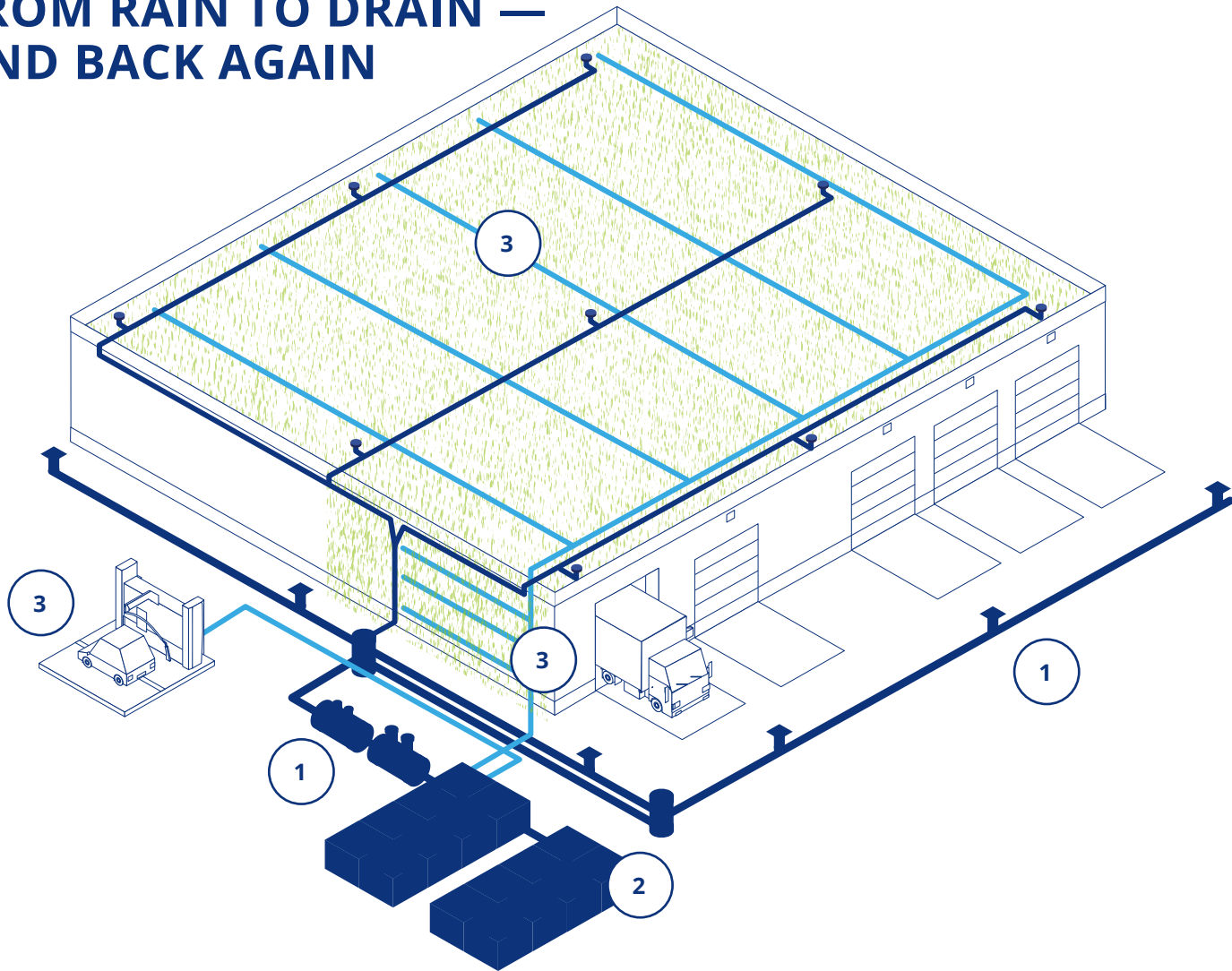
Effective stormwater management can also reduce overheads with rainwater harvesting, reuse and infiltration. Excess water can be retained and slowly infiltrated into the soil rather than through a public utility. Water consumption can also be reduced by reusing rainwater for bathroom facilities, on-site car and truck washing, or green roof and facade irrigation.



## ENVIRONMENTALLY SOUND

The benefits of applying efficient water management practices, such as rainwater reuse and infiltration, aren't limited to improving your environmental impact. With PIPELIFE's solutions, you can ensure you remain compliant with mounting environmental building laws, standards and certifications — both today and in the future. Building sustainability legislation continues to pass at both national and international levels while building standards and certifications, such as BREEAM, LEED and DGNB, are also tightening their requirements. This also applies to expected EU taxonomy regulations.

# FROM RAIN TO DRAIN — AND BACK AGAIN



1

## ATTENUATION

**Effective melt and rain-water runoff retention and storage:**

Remain operational and avoid flood damage from heavy rainfalls

Prevent stormwater and combined sewerage overflows

Harvest water for reuse

2

## CONTROLLED INFILTRATION

**Gradual, controlled discharge of excess water into the soil:**

Increase your independence from public stormwater and combined sewerage systems

Establish hydraulic invariance and allow the completion of natural water cycles despite soil sealing

Keep groundwater resources and avoid related subsidence

3

## REUSE OF WATER

**Save on valuable drinking water by reusing collected rainwater for:**

Green roofs and facades

Greywater replacement

Landscape irrigation

Truck wash

Other non-potable water uses

# BENEFIT FROM STRESS-FREE STORMWATER SOLUTIONS



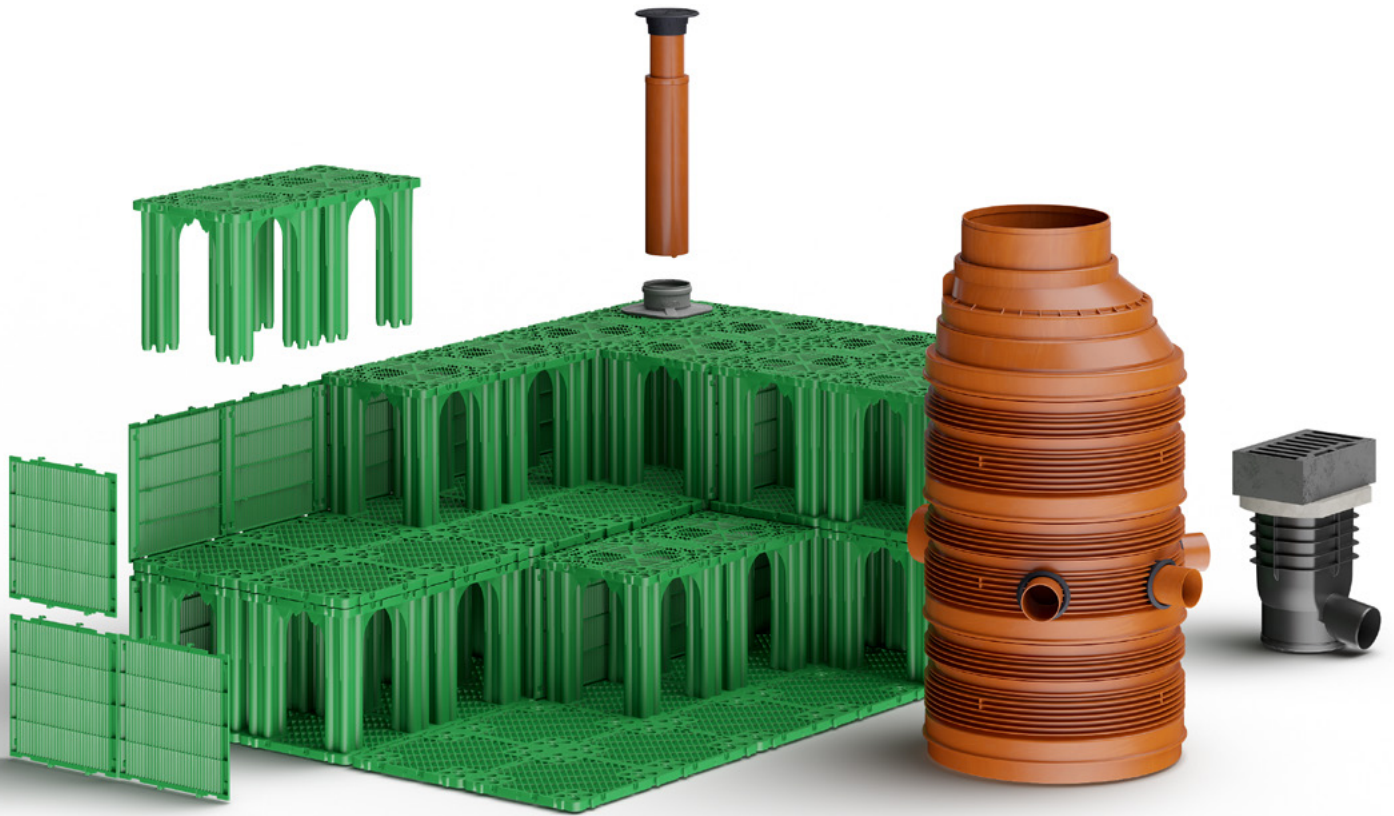
PIPELIFE stormwater management solutions safeguard your property while ensuring your business remains at peak operation. We aim to ensure the implementation and operation of your stormwater system is stress-free through the **efficient use of your space, time and money.**

## + COUNT ON OUR FULL DESIGN SERVICE FROM CONCEPTION TO DELIVERY.

We make sure your system is bespoke to the specific requirements of your business and perfectly aligned with your operation.

## + RELY ON DURABLE STRUCTURES WITH LONG SERVICE LIVES.

Correctly installed, our products withstand heavy traffic loads and boast a service life of at least 50 years.

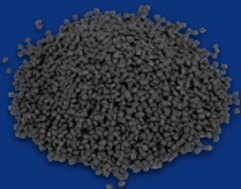


**TAKE ADVANTAGE OF TURNKEY SOLUTIONS THANKS TO MODULAR, COMPATIBLE PRODUCT DESIGN.**

Our comprehensive range of modular products and components can be mixed and matched to fit almost all commercial settings. Excellent compatibility ensures high quality and reliability throughout the complete system.

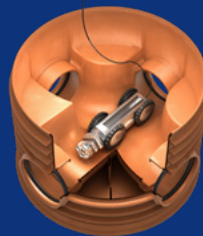
**SAVE TIME WITH FAST, FAILSAFE SYSTEM IMPLEMENTATION.**

Technical support and easy-to-use modular design ensure error-free and on-time installation.



**REDUCE YOUR ENVIRONMENTAL FOOTPRINT AND FUTURE-PROOF YOUR BUSINESS.**

Our products are not only sustainably produced, they are also 100% recyclable or reusable. In addition, you have options, such as the Stormbox E, which are made from 100% recycled material.



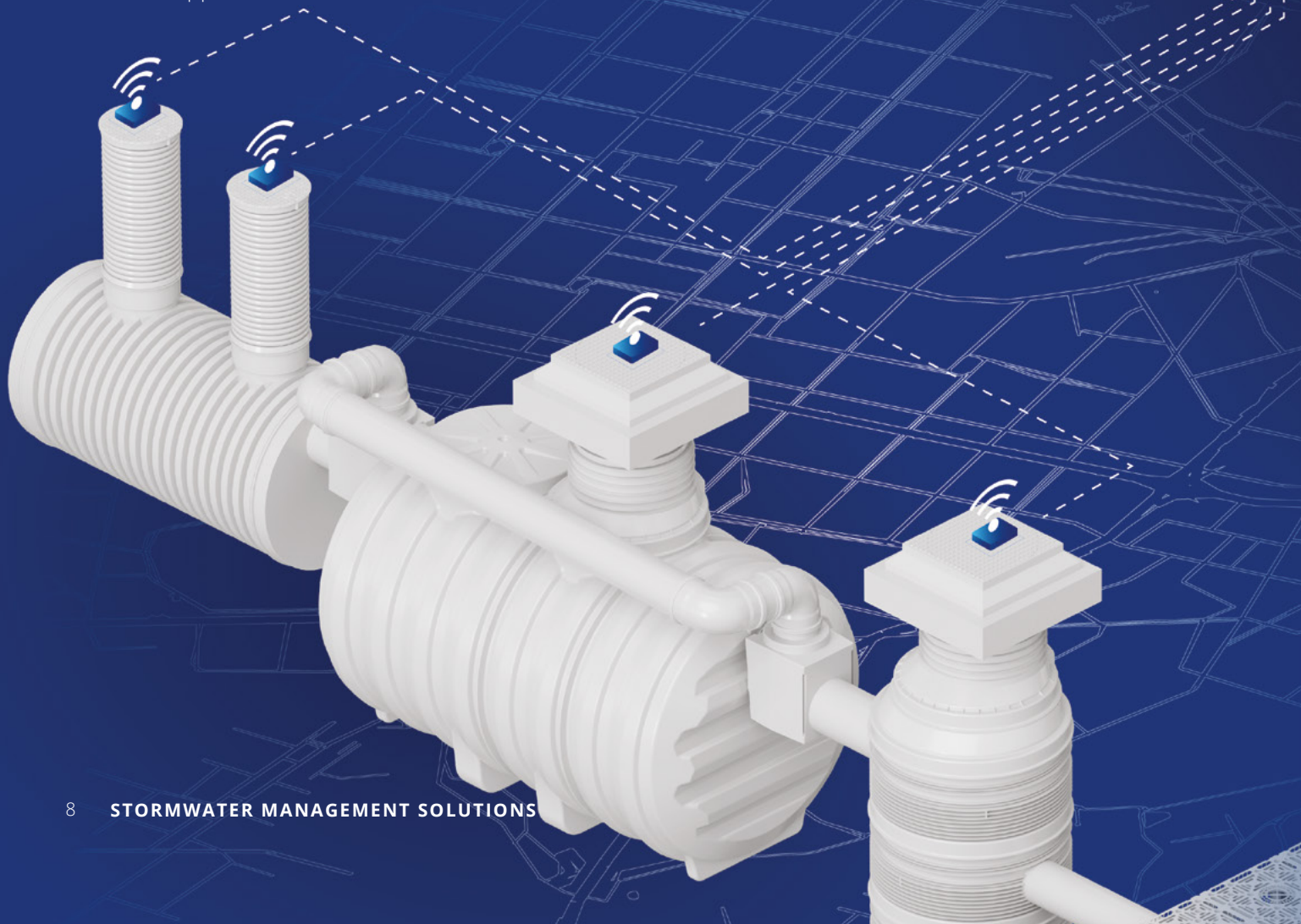
**AVOID DISRUPTIONS WITH STRAIGHTFORWARD OPERATION AND MAINTENANCE.**

High-quality components, easy access for cleaning and inspection, and options for smart system control ensure efficient asset management.

# OPTIMIZE PERFORMANCE WITH SMART SOLUTIONS

The integration of PIPELIFE smart solutions into your stormwater management system provides peace of mind with greater control, easier asset management, stress-free operation, improved resource efficiency, preemptive maintenance and more.

PIPELIFE SmartHub is a web-based data and software platform that provides a powerful interface for conducting daily operations and asset management. SmartHub complies with the highest IT security standards and is available 24/7 via your web browser or the PIPELIFE SmartHub app.







### **PREVENT INTERRUPTIONS AND TAKE MEASURES AHEAD OF TIME.**

Predict expected water quantity with integrated weather data analysis and avoid system capacity overloads with preemptive alerts via SmartHub.

### **OPTIMIZE ENERGY CONSUMPTION AND MANAGE RESOURCES MORE EFFICIENTLY.**

PIPELIFE smart solutions help you save energy by ensuring pumping and cleaning cycles are executed as effectively as possible and only performed when required.

### **OPERATE AND MANAGE YOUR ASSETS REMOTELY.**

Enjoy 24/7 remote operation, monitoring and visualization of data via the cloud-based SmartHub interface.

### **AVOID DOWNTIME AND SAVE ON UNNECESSARY MAINTENANCE COSTS.**

Schedule predictive maintenance suggestions based on recorded water-level data to avoid system failures and ensure maintenance works are only carried out when strictly necessary.



---

# CREATE SUSTAINABLE VALUE

PIPELIFE is helping you meet your sustainability goals with eco-friendly products and practices. We continuously optimize our processes throughout the value chain while maximizing the service life of our products and ensuring they can be recycled or reused at the end of their lifecycle. Beyond this, PIPELIFE stormwater management systems facilitate compliance with tightening sustainability regulations and certifications.

## **EU TAXONOMY AND BUILDING CERTIFICATIONS**

Ecological water management is particularly pertinent to the EU taxonomy on sustainable business activities. The taxonomy regulation directly refers to the importance of business measures that mitigate the effects of flooding and reduce pollutant emissions into surface and groundwater. Beyond this, the three major sustainable building certifications, DGNB, LEED and BREEAM, all categorically state the need for flood prevention and water supply protection as a requirement for accreditation.

## **WATER REUSE AND INFILTRATION**

At the heart of stormwater management is a desire to turn a problem into a solution through the reuse of rainwater and water management practices that emulate the natural water cycle as much as possible. Circular water management is key to achieving EU sustainability goals for commercial enterprises and stormwater management systems provide an opportunity to turn drainage and flood prevention into a water shortage solution.

## **CIRCULAR ECONOMY**

Self-imposed sustainability goals ensure that, as of 2023, all new PIPELIFE products are 100% recyclable or reusable. We also place great emphasis on the uptake of recycled and fossil-free plastic in production while maintaining the same high quality our clients expect.

For instance, with our Stormbox E, we offer clients a 100% recycled alternative to standard infiltration and attenuation systems.

## **ECOLOGICAL CHOICES WITH EPDS**

Environmental Product Declarations contain standardized third-party verified data about the environmental impacts of products across their entire lifecycle. PIPELIFE has started working on the digitization of EPDs so you can easily compare the environmental impact of products from various suppliers.

## **IMPROVING EFFICIENCY THROUGH DIGITALIZATION**

We deploy industry 4.0 technologies to measure and optimize our energy and raw material consumption, as well as their related CO<sub>2</sub> emissions. Quality management systems and environmental measures are implemented at all PIPELIFE production sites, meeting national as well as international standards such as ISO 9001 (Quality Management System) and ISO 14001 standards (Environmental Management System).

## **BIODIVERSITY**

As part of the World of Wienerberger, PIPELIFE is working towards self-imposed environmental, social and corporate governance goals. Accordingly, biodiversity measures are implemented at all our plants to encourage flora and fauna to flourish around our production sites.



The contents and information contained in this brochure are intended for general marketing purposes only and shall not be relied upon by any person as complete or accurate. In particular, this brochure cannot replace proper expert advice on the characteristics of the products, their usage, suitability for any intended purpose, or the proper processing method. All contributions and illustrations in this brochure are subject to copyright. Unless explicitly otherwise stated, the repetition of content is not permitted. The use of photocopies from this brochure is for private and non-commercial use only. Any duplication or distribution for professional purposes is strictly forbidden. Non-Liability: PIPELIFE has established this brochure to the best of its knowledge. PIPELIFE cannot accept any liability suffered or incurred by any person resulting from or in connection with any reliance on the content of or the information contained in this brochure. This limitation applies to all loss or damage of any kind, including but not limited to direct or indirect damages, consequential or punitive damages, frustrated expenses, lost profit or loss of business.