

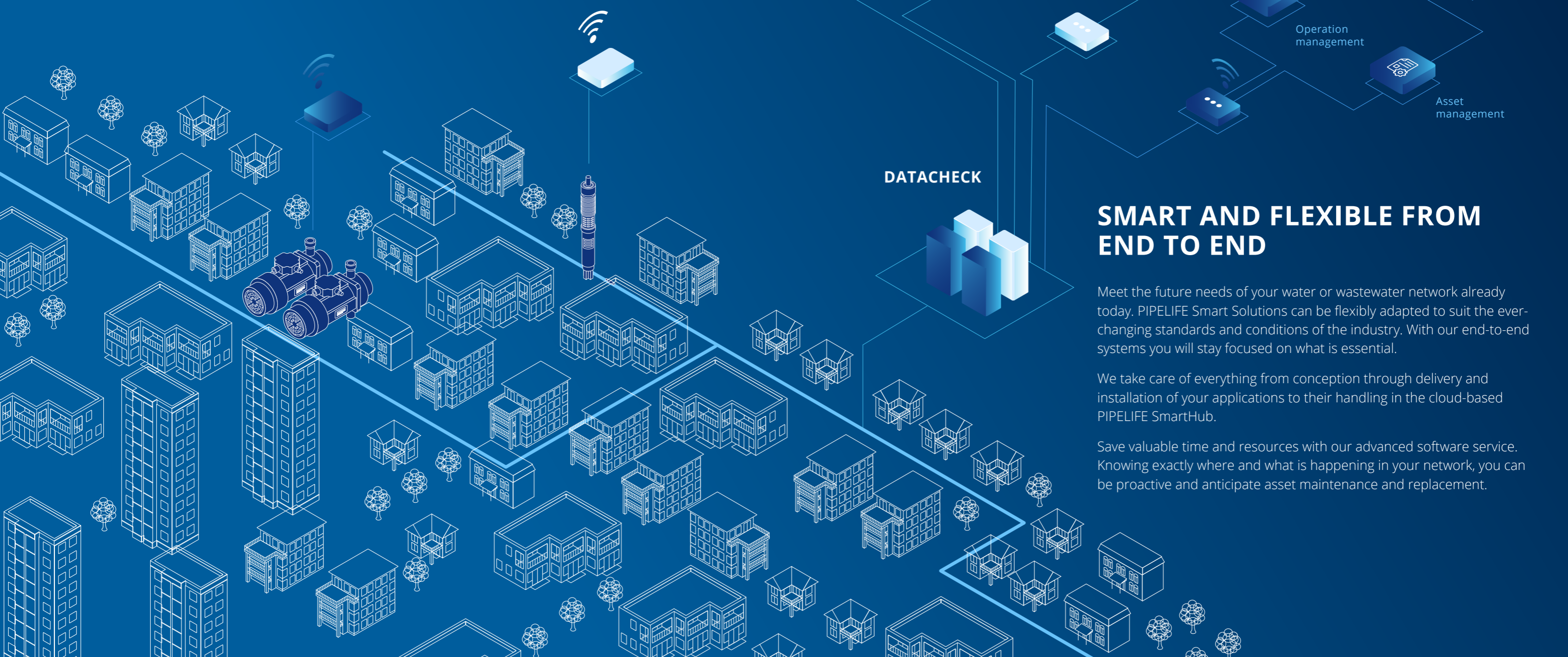
# PIPELIFE SMART SOLUTIONS. INTELLIGENT NETWORK OPERATIONS AND ASSET MANAGEMENT.



Meet current and future challenges of water- und wastewater networks quicker and more efficiently with our Smart Solutions.

# ACT, DON'T REACT

PIPELIFE is a leading international provider of sustainable water, energy and data solutions. Our seamlessly integrated digital smart solutions are developed to enhance your networks and assets to meet current and future challenges more efficiently and effectively. Intelligent software tailored precisely to your setup's needs and requirements facilitates operations, simplifies management and decision-making, and creates transparency. Opportunities for optimization will no longer remain untapped.



## SMART AND FLEXIBLE FROM END TO END

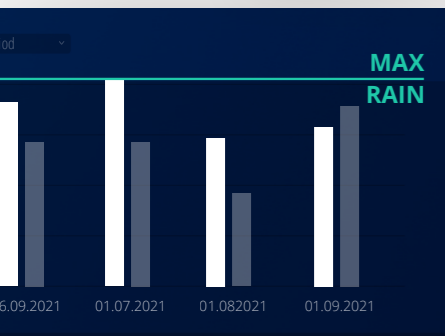
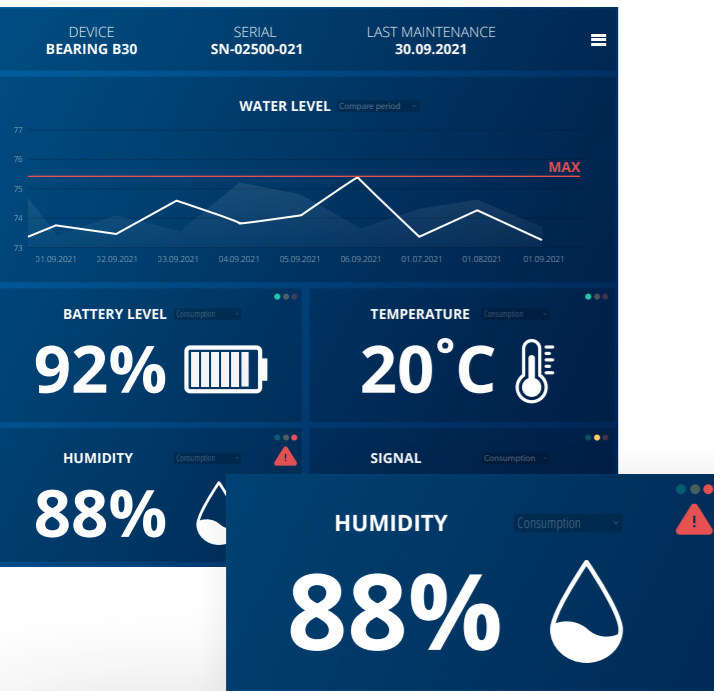
Meet the future needs of your water or wastewater network already today. PIPELIFE Smart Solutions can be flexibly adapted to suit the ever-changing standards and conditions of the industry. With our end-to-end systems you will stay focused on what is essential.

We take care of everything from conception through delivery and installation of your applications to their handling in the cloud-based PIPELIFE SmartHub.

Save valuable time and resources with our advanced software service. Knowing exactly where and what is happening in your network, you can be proactive and anticipate asset maintenance and replacement.

# SMARTHUB

Managing assets and operating networks has never been more efficient. The secure cloud-based PIPELIFE SmartHub is the core where everything converges. It allows remote access to several smart assets and accommodates all the generated data.



## TURNKEY DATA AND CONTROL SYSTEM

From the data gathered and generated by our intelligent hardware to comprehensive analyses by our software, all information runs together in the PIPELIFE SmartHub. Through web- and cloud-based technologies, you receive a data and control system tailored to the structure of your water network, also considering your clients' specific needs.

## ALL INFORMATION IN ONE PLACE

PIPELIFE SmartHub gives you safe access to telemetry data and process control and allows you to operate devices remotely. In addition, it serves as storage for all documents, meta and external data related to your processes and assets. Data mining and machine learning increase the efficiency and effectiveness of your daily operations. With predictive and proactive maintenance through SmartHub, you can minimize network maintenance and costs. Intelligent data models facilitate decision-making and implementation processes by direct IIoT communication between the cloud and the devices themselves.



## ADAPTABLE DASHBOARD

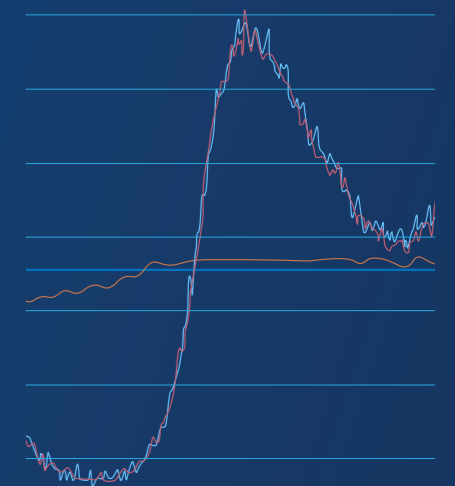
PIPELIFE SmartHub's dashboard offers a variety of functions for the direct and remote control of processes and devices. Its interface can be easily modified within a few clicks to show the metrics and KPIs you wish to see at first glance. To increase customer-facing visibility and transparency, you can individually adapt and also share relevant parts of your dashboards with clients. Reports are automatically generated from all uploaded maintenance data for asset management purposes. Alternatively, information can be seamlessly integrated into your existing SCADA system.

### REPORTS INCLUDE INFORMATION ON:

- Active interventions in the network
- Malfunctions and defects
- Maintenance times and costs
- Depreciation of assets
- Etc.

## FORECASTING AND PRESCRIPTIVE MAINTENANCE

Increase asset and network reliability by decreasing operational risks. While real-time monitoring, alerts and notifications increase your responsiveness, forecasting and prescriptive maintenance will make sure that critical situations don't even arise. For this purpose, PIPELIFE SmartHub delivers information about the condition of your assets based on long-term data analyses. Operators' dashboards can show results and recommendations to take corresponding measures.



## DATA CHECK – ENSURING QUANTITY AND QUALITY

**Improve the service to your customers with relevant data. Through comprehensive data quality and quantity assessment, we make sure that only accurate information is extracted.**

Sufficient data of adequate quality is required to derive meaningful information from your assets. As a rule of thumb, the larger the data quantity and the better its quality, the more accurate the results are. At least three years of data are typically required for machine learning.

However, for a start, information can be extracted even from limited amounts of data or datasets containing gaps and unlikely extreme values. We have the necessary tools and expertise to prepare and clean datasets. Although these results may not be directly applicable in daily operations, they allow experiencing the value of data-driven operational support and data-driven asset management. Moreover, they encourage the collection and storage of more and improved data.

Our data assessment tool evaluates if present data integrity and consistency are sufficient for your system to function.

## DATA SECURITY – YOUR DATA, YOUR RULES

**The importance of data protection increases with the growing amount of generated and stored data. That is why protecting and securing your business property is of the greatest importance to us.**

Data has become a significant asset to the water industry, and most utilities apply stringent data policies. By strictly complying with international, local and your company standards, we make sure your information is treated with the greatest care.

Depending on your preferences, we can run our software on-premise (your local server) or on our own dedicated network. Whichever way you choose, all information, calculations, data of historic asset failures as well as forecasts are your company's property and are treated accordingly with utmost care.

PIPELIFES Smart Solutions are all set up and delivered in compliance with ISO 27001 standards.





The contents and information contained in this brochure are intended for general marketing purposes only and shall not be relied upon by any person as complete or accurate. In particular this brochure cannot replace proper expert advice on particularly the characteristics of the products, its usage, its suitability for any intended purpose, or the proper processing method. All contributions and illustrations in this brochure are subject to copyright. Unless explicitly otherwise stated the repetition of content is not permitted. The use of photo-copies from this brochure is for private and non-commercial use only. Any duplication or distribution for professional purpose is strictly forbidden. Non-Liability: Pipelife has established this brochure to the best of its knowledge. Pipelife cannot accept any liability suffered or incurred by any person resulting from or in connection with any reliance on the content of or the information contained in this brochure. This limitation applies to all loss or damage of any kind including but not limited to direct or indirect damages, consequential or punitive damages, frustrated expenses, lost profit, or loss of business.